

## Modular Solutions: Data Center Construction

Triple Point's standardized approach to designing, building, and delivering large-scale, complex modular components provides the best experience and finished product for our customers. Modularization allows us to uncouple from project timelines—designing, creating, and pre-commissioning full MEP systems in our off-site, controlled environment for later integration.



### MODULAR PRODUCTS

- Chiller Modules & Modular CUP's
- Modular Power Distribution Units
- Modular Hot Aisle Containment
- Multi-Trade Modular Pipe Racks
- Modular Cooling Distribution Units
- Pump & Exchanger Skids
- Prefabricated Pipe & Ductwork

Leveraging self-performed design and fabrication under one roof allows us to provide truly turn-key solutions. Our extensive capabilities range from structural steel, sheetmetal, process piping, plumbing, and electrical, to virtual design services, fire protection, and blast and paint. Utilizing fully automated, multiple strategically located fabrication facilities (totalling 850,000 sq ft of dedicated construction space), certified riggers, and fleet of vehicles, Triple Point not only designs and manufactures fully integrated solutions, we can transport them to job sites anywhere in the world to further maximize efficiency.

### MODULAR BENEFITS

- COST:**  
 Reduced labor and increased efficiency vs traditional build

---

- SCHEDULE:**  
 Precisely timed delivery; no disruption of other trades, increased scheduling capabilities

---

- QUALITY:**  
 Standardized processes in a controlled environment ensure the highest quality

---

- SAFETY:**  
 On-site hazards are reduced



# Chiller Modules & Modular CUP's

## For Scalable Data Center Construction



### CHILLER MODULES & CUP'S INCLUDE:

- Complete VDC Models that integrate into the plant model
- Structural Engineering PE stamped for destination state
- All equipment mounted
- Complete in-house fabricated and coated structural module with all supports, lifting lugs/fork slots, and anchoring plates
- All Mechanical tagged mechanical components including pumps, valves, instrumentation
- Fabricated and tested piping per ASME B31.3 installed and fully insulated
- All control wiring, conduit, panels, & junction boxes
- Comprehensive QA/QC inspected and documented in turnover package
- On-time shipment to site

# Modular Power Distribution Units

## For Scalable Data Center Construction

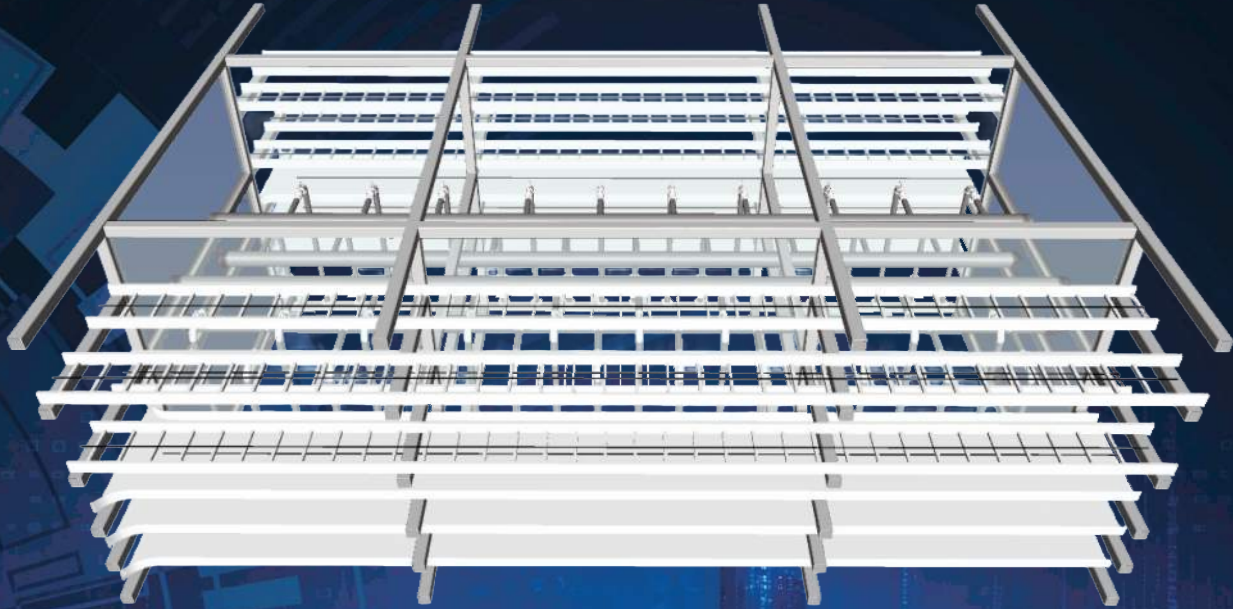


### PDU MODULES INCLUDE:

- Complete VDC Models that integrate into the plant model
- Structural Engineering PE stamped for destination state
- Complete in-house fabricated and assembled structural module with all supports, lifting lugs, and anchoring plates
- All Equipment & Panels mounted
- All Cable BUS, Tray & Conduit installed
- Control & Power Wiring Installed, Terminated & Continuity Tested
- Available with Sealed & Tested Cladding Enclosures
- Comprehensive QA/QC inspected and documented in turnover package
- On-time shipment to site

# Modular Hot Aisle Containment Units

## For Scalable Data Center Construction

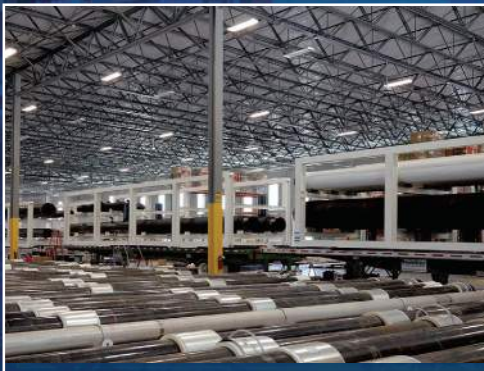


### HAC MODULES INCLUDE:

- Complete VDC Models that integrate into the plant model
- Structural Engineering PE stamped for destination state
- Complete in-house fabricated and assembled structural module with all supports, lifting lugs, and anchoring plates
- Available in coated steel or aluminum
- All technical water pipe, fittings, valves, and connections
- All cable bus, tray, conduit, and accessible support system
- Comprehensive QA/QC inspected and documented in turnover package
- On-time shipment to site

# Multi-Trade Modular Pipe Racks

Exterior & Interior: For Scalable Data Center Construction

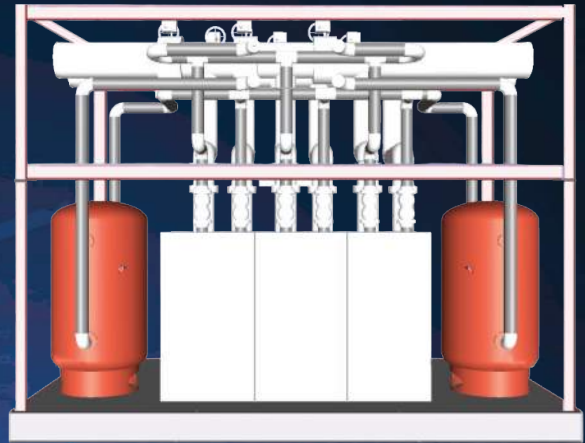
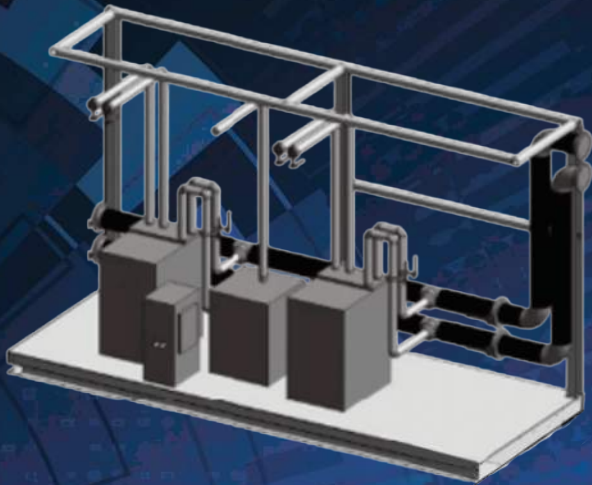


## MULTI-TRADE RACKS INCLUDE:

- Complete VDC Models that integrate into the plant model
- Structural Engineering PE stamped for destination state
- Complete in-house fabricated and assembled structural module with all supports, lifting lugs, and anchoring plates
- All pipe, fittings, valves, instruments, and connections
- Pipe heat trace and insulation
- All cable bus, tray, conduit, and accessible support system
- Comprehensive QA/QC inspected and documented in turnover package
- On-time shipment to site

# Modular Coolant Distribution Units

## For Scalable Data Center Construction



### CDU MODULES INCLUDE:

- Complete VDC Models that integrate into the plant model
- Structural Engineering PE stamped for destination state
- All Equipment Mounted
- Complete in-house fabricated and coated structural module with all supports, lifting lugs/fork slots, and anchoring plates
- All Mechanical tagged mechanical components including pumps, valves, instrumentation
- Fabricated and tested piping per ASME B31.3 install and fully insulated
- All control wiring, conduit, panels, & junction boxes
- Comprehensive QA/QC inspected and documented in turnover package
- On-time shipment to site

# Modular Pump & Exchanger Skids

## For Scalable Data Center Construction



### PUMP & EXCHANGER SKIDS INCLUDE:

- Complete VDC Models that integrate into the plant model
- Structural Engineering PE stamped for destination state
- Complete in-house fabricated and assembled structural module with all supports, lifting lugs, and anchoring plates
- All equipment mounted
- All Piping and Insulation
- Fabricated and tested piping per ASME B31.3 install and fully insulated
- All valves and instrumentation
- All control wiring, conduit, panels, & junction boxes
- Comprehensive QA/QC inspected and documented in turnover package
- On-time shipment to site

# Prefabricated Pipe & Ductwork

## For All Industrial Markets & Applications



### PREFAB PIPE & DUCTWORK INCLUDE:

- ASME Pipe Spool Fabrication including PP Stamp
- Carbon, Stainless, Alloys, Titanium, Heavy Chrome
- Automated Cutting & Welding
- Pre & Post-Weld Heat Treat
- Over 30 Fitting & Welding Stations
- Dedicated Spiral & Flat Oval Ductwork Shop
- HVAC Ductwork, Lab Exhaust, & Fume Exhaust
- Double Wall & Grease Duct Systems
- Comprehensive QA/QC inspected and documented in turnover package
- On-time shipment to site